

RADAR TRAFFIC SURVEYS**APRIL 2012****OFFICER TRAFFIC SURVEYS**

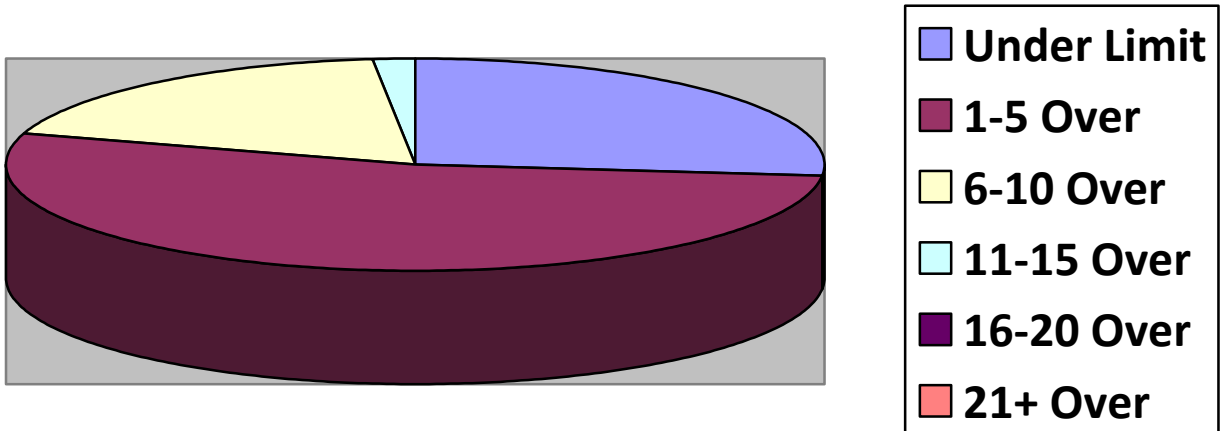
Totals	Rte 149 (2 nd NH Tpk(1	OldCounty (1	Clement (2	EstDrng (3
Total Cars		64	11	28	38
Under Limit		17	0	6	7
+1 – 5 over		34	9	13	22
+6 – 10 over		12	2	8	7
+11 – 15 over		1	0	1	1
+16 – 20 over					
+ 21 over					
Stopped		0	0	0	1
Warnings		0	0	0	1
Summons		0	0	0	0

Totals	Rsvr (LngWds(Mnslvl(Mill/Union(Cross(1
Total Cars					11
Under Limit					2
+1 – 5 over					5
+6 – 10 over					4
+11 – 15 over					
+16 – 20 over					
+ 21 over					
Stopped					0
Warnings					0
Summons					0

VOLUNTEER TRAFFIC SURVEYS

Totals	EastDrng(Union (Mill (HltnCrs(ClmtHill(LngWds (
Total Cars						
Under Limit						
+ 1 – 5 over						
+ 6 – 10 over						
+ 11 – 15 over						
+ 16 – 20 over						
+ 21 over						

Primary Roads / 1 Surveys



Secondary Roads / 7 Surveys

