

RADAR TRAFFIC SURVEYS**April 2011****OFFICER TRAFFIC SURVEYS**

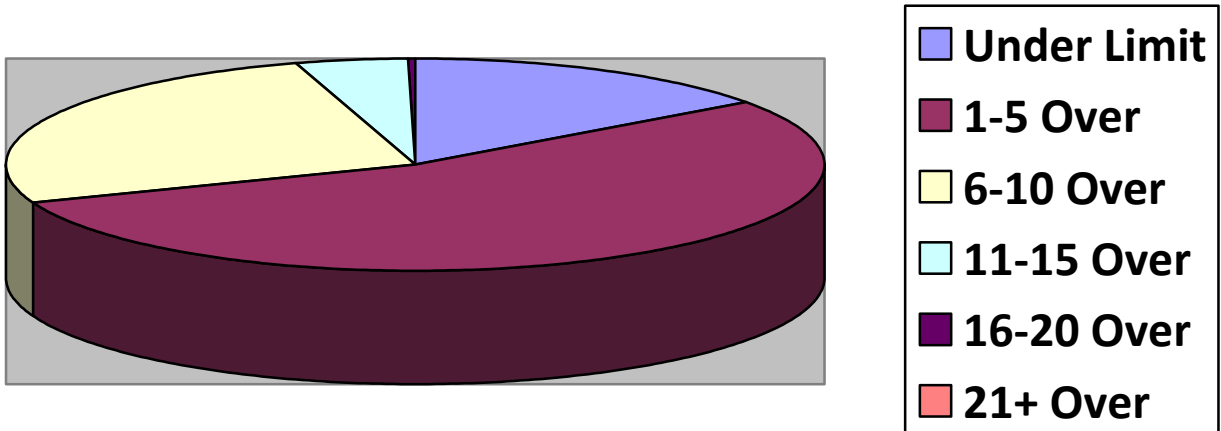
Totals	Rte 149 (2	2 nd NH Tpk(3	OldCounty (2	Clement (1	Un/Mill (
Total Cars	129	126	42	13	
Under Limit	26	12	13	1	
+1 – 5 over	69	59	17	7	
+6 – 10 over	30	36	10	1	
+11 – 15 over	2	9	2	3	
+16 – 20 over		1			
+ 21 over					
Stopped	3	8	1	3	
Warnings	3	8	1	3	
Summons	0	0	0	0	

Totals	North (EastDrngRd(Lngwds(PtrWdHl(Cross(
Total Cars					
Under Limit					
+1 – 5 over					
+6 – 10 over					
+11 – 15 over					
+16 – 20 over					
+ 21 over					
Stopped					
Warnings					
Summons					

VOLUNTEER TRAFFIC SURVEYS

Totals	EastDrng(Union (Mill (HltnCrs(ClmtHill(LngWds (
Total Cars						
Under Limit						
+ 1 – 5 over						
+ 6 – 10 over						
+ 11 – 15 over						
+ 16 – 20 over						
+ 21 over						

Primary Roads / 5 Surveys



Secondary Roads / 3 Surveys

