

RADAR TRAFFIC SURVEYS**AUGUST 2012****OFFICER TRAFFIC SURVEYS**

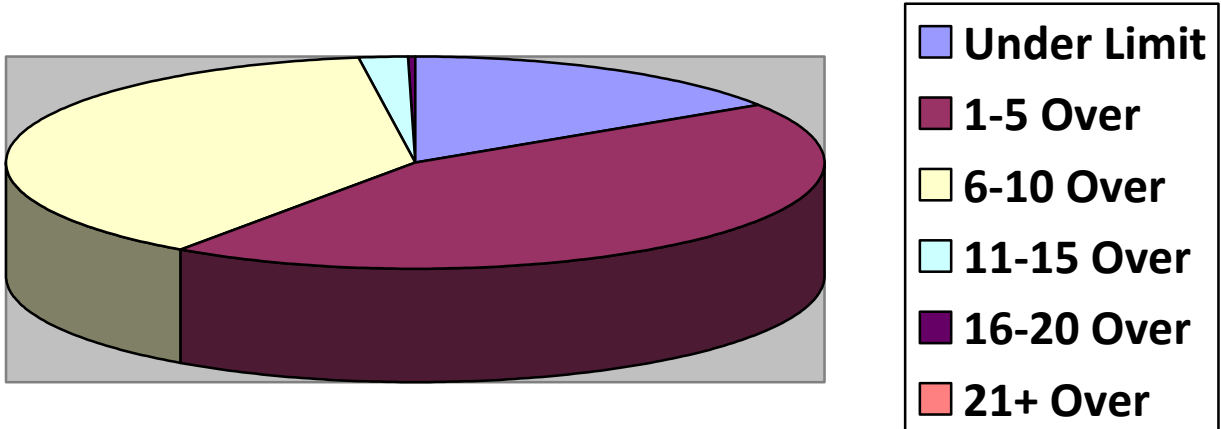
Totals	Rte 149 (2	2 nd NH Tpk(5	OldCounty (1	Clement (1	EstDrng (4
Total Cars	55	155	12	23	57
Under Limit	0	42	1	5	7
+1 – 5 over	37	78	3	13	25
+6 – 10 over	79	21	7	4	17
+11 – 15 over	1	4	1	1	7
+16 – 20 over		1			1
+ 21 over					
Stopped	1	5	1	1	1
Warnings	1	5	1	1	1
Summons	0	0	0	0	0

Totals	Rsvr (1	LngWds(Mnslvl(Other(1	Cross(1
Total Cars	23			7	10
Under Limit	14			0	1
+1 – 5 over	8			5	5
+6 – 10 over	1			2	4
+11 – 15 over					1
+16 – 20 over					
+ 21 over					
Stopped	0			0	1
Warnings	0			0	1
Summons	0			0	0

VOLUNTEER TRAFFIC SURVEYS

Totals	EastDrng(Union (Mill (OldCty(ClmtHill(LngWds (
Total Cars						
Under Limit						
+ 1 – 5 over						
+ 6 – 10 over						
+ 11 – 15 over						
+ 16 – 20 over						
+ 21 over						

Primary Roads / 7 Surveys



Secondary Roads / 9 Surveys

