

RADAR TRAFFIC SURVEYS**AUGUST 2011****OFFICER TRAFFIC SURVEYS**

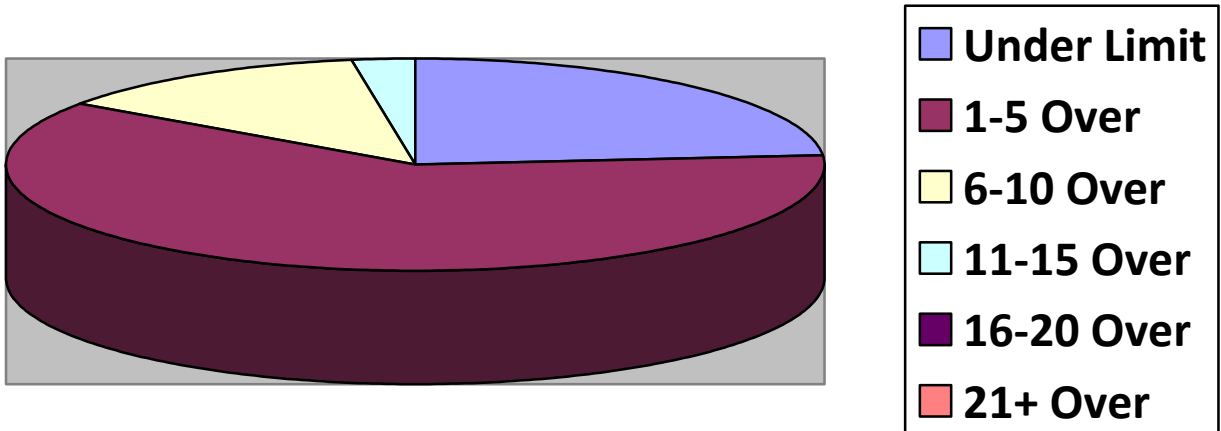
Totals	Rte 149 (3	2 nd NH Tpk(3	OldCounty (3	Clement (2	Un/Mill (
Total Cars	144	119	47	36	
Under Limit	47	17	11	23	
+1 – 5 over	89	76	27	13	
+6 – 10 over	13	21	7	4	
+11 – 15 over	4	3	2		
+16 – 20 over					
+ 21 over					
Stopped	4	2	2	0	
Warnings	4	2	2	0	
Summons	0	0	0	0	

Totals	North (EastDrngRd(Lngwds(1	PtrWdHl(Cross(
Total Cars			36		
Under Limit			3		
+1 – 5 over			22		
+6 – 10 over			9		
+11 – 15 over			1		
+16 – 20 over					
+ 21 over					
Stopped			2		
Warnings			2		
Summons			0		

VOLUNTEER TRAFFIC SURVEYS

Totals	EastDrng(Union (Mill (HltnCrs(ClmtHill(LngWds (
Total Cars						
Under Limit						
+ 1 – 5 over						
+ 6 – 10 over						
+ 11 – 15 over						
+ 16 – 20 over						
+ 21 over						

Primary Roads / 6 Surveys



Secondary Roads / 6 Surveys

