

**RADAR TRAFFIC SURVEYS****January 2012****OFFICER TRAFFIC SURVEYS**

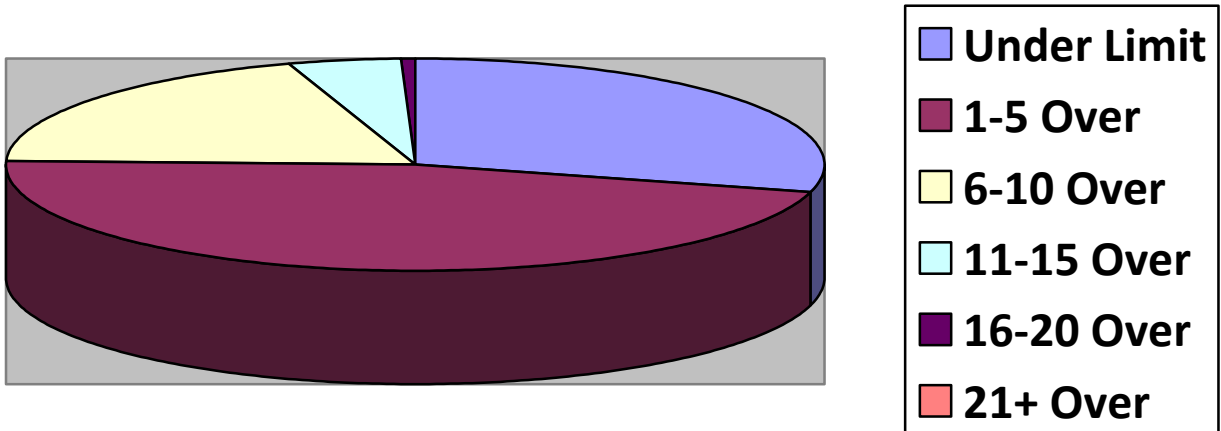
Totals	Rte 149 (4	2 <sup>nd</sup> NH Tpk(4	OldCounty (1	Clement (	EstDrng (1
Total Cars	192	118	26		9
Under Limit	83	10	3		1
+1 – 5 over	91	56	9		7
+6 – 10 over	26	40	14		1
+11 – 15 over	1	13	0		0
+16 – 20 over	0	2	0		0
+ 21 over	0	0	0		0
Stopped	2	8	0		0
Warnings	2	7	0		0
Summons	0	1	0		0

Totals	Rsvr (1	LngWds(	Mnslvl(	Mill/Union(1	Cross(
Total Cars	5			19	
Under Limit	3			0	
+1 – 5 over	2			13	
+6 – 10 over	0			6	
+11 – 15 over	0			1	
+16 – 20 over	0			0	
+ 21 over	0			0	
Stopped	0			0	
Warnings	0			0	
Summons	0			0	

**VOLUNTEER TRAFFIC SURVEYS**

Totals	EastDrng(	Union (	Mill (	HltnCrs(	ClmtHill(	LngWds (
Total Cars						
Under Limit						
+ 1 – 5 over						
+ 6 – 10 over						
+ 11 – 15 over						
+ 16 – 20 over						
+ 21 over						

## Primary Roads / 8 Surveys



## Secondary Roads / 4 Surveys

