

**RADAR TRAFFIC SURVEYS****JULY 2012****OFFICER TRAFFIC SURVEYS**

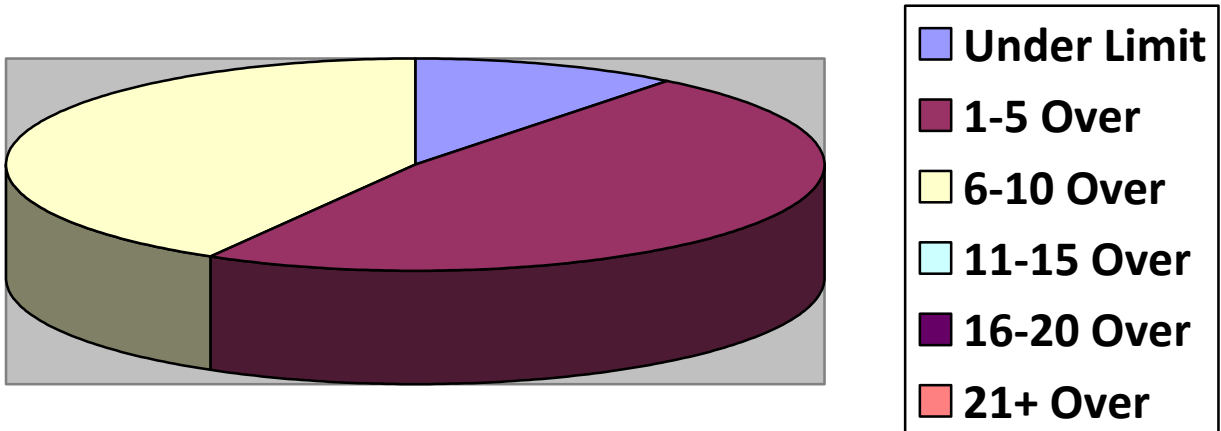
Totals	Rte 149 (	2 <sup>nd</sup> NH Tpk(1	OldCounty (1	Clement (1	EstDrng (2
Total Cars		48	15	14	12
Under Limit		5	2	3	2
+1 – 5 over		23	10	6	6
+6 – 10 over		20	2	5	4
+11 – 15 over			1		
+16 – 20 over					
+ 21 over					
Stopped		0	1	1	0
Warnings		0	1	1	0
Summons		0	0	0	0

Totals	Rsvr (	LngWds(1	Mnslvl(	Other(	Cross(1
Total Cars		19			14
Under Limit		4			1
+1 – 5 over		7			8
+6 – 10 over		6			4
+11 – 15 over		1			1
+16 – 20 over					
+ 21 over					
Stopped		1			1
Warnings		1			1
Summons		0			0

**VOLUNTEER TRAFFIC SURVEYS**

Totals	EastDrng(	Union (	Mill (	OldCty(1	ClmtHill(	LngWds (
Total Cars				28		
Under Limit				7		
+ 1 – 5 over				9		
+ 6 – 10 over				9		
+ 11 – 15 over				2		
+ 16 – 20 over				1		
+ 21 over						

## Primary Roads / 1 Surveys



## Secondary Roads / 6 Surveys

