

RADAR TRAFFIC SURVEYS**JUNE 2012****OFFICER TRAFFIC SURVEYS**

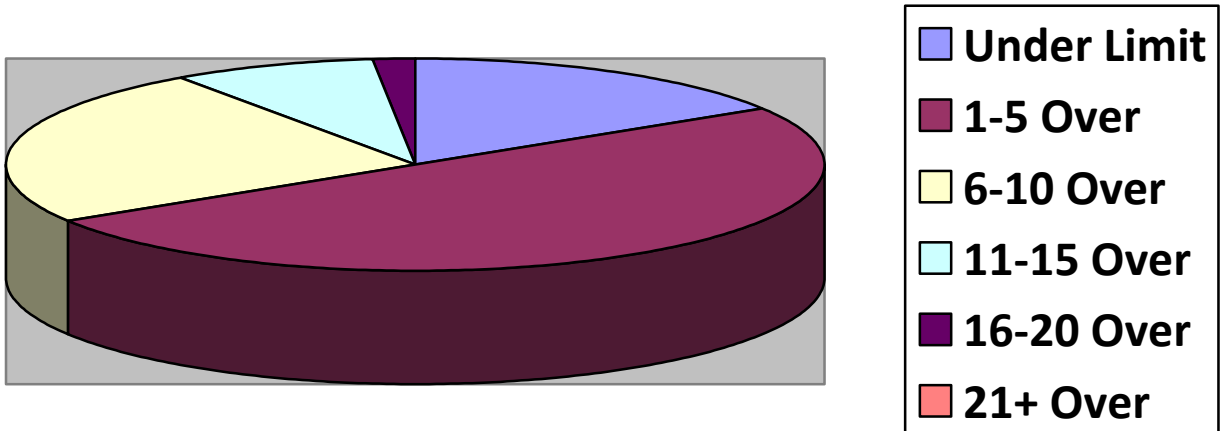
Totals	Rte 149 (2 nd NH Tpk(1	OldCounty (2	Clement (1	EstDrng (2
Total Cars		62	29	20	9
Under Limit		10	8	5	2
+1 – 5 over		31	18	7	5
+6 – 10 over		15	3	7	2
+11 – 15 over		5		1	
+16 – 20 over		1			
+ 21 over					
Stopped		1		3	0
Warnings		1		3	0
Summons		0		0	0

Totals	Rsvr (LngWds(2	Mnslvl(Other(1	Cross(1
Total Cars		89		18	18
Under Limit		11		11	2
+1 – 5 over		41		6	11
+6 – 10 over		37		2	5
+11 – 15 over		1			
+16 – 20 over		1			
+ 21 over					
Stopped		2			1
Warnings		2			1
Summons		0			0

VOLUNTEER TRAFFIC SURVEYS

Totals	EastDrng(Union (Mill (OldCty(1	ClmtHill(LngWds (
Total Cars				28		
Under Limit				7		
+ 1 – 5 over				9		
+ 6 – 10 over				9		
+ 11 – 15 over				2		
+ 16 – 20 over				1		
+ 21 over						

Primary Roads / 1 Surveys



Secondary Roads / 10 Surveys

