

RADAR TRAFFIC SURVEYS**March 2011****OFFICER TRAFFIC SURVEYS**

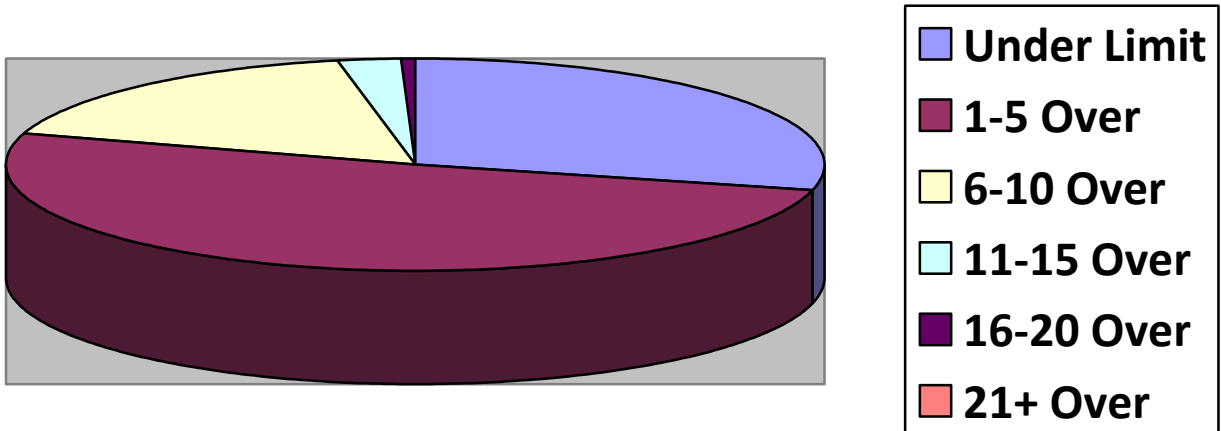
Totals	EastDeer(2	Old County (2	2 nd NH (6	Clement (Un/Mill (
Total Cars	22	26	168		
Under Limit	5	11	39		
+1 – 5 over	9	11	92		
+6 – 10 over	7	3	31		
+11 – 15 over	1	1	5		
+16 – 20 over			1		
+ 21 over					
Stopped	0	1	4		
Warnings	0	1	4		
Summons	0	0	0		

Totals	North (1	Route 149(1	Lngwds(1	PtrWdHl(Cross(
Total Cars	24	30	28		
Under Limit	17	18	6		
+1 – 5 over	6	8	16		
+6 – 10 over	1	3	4		
+11 – 15 over			1		
+16 – 20 over			1		
+ 21 over					
Stopped	1	1	2		
Warnings	1	1	2		
Summons	0	0	0		

VOLUNTEER TRAFFIC SURVEYS

Totals	EastDrng(Union (Mill (HltnCrs(ClmtHill(LngWds (
Total Cars						
Under Limit						
+ 1 – 5 over						
+ 6 – 10 over						
+ 11 – 15 over						
+ 16 – 20 over						
+ 21 over						

Primary Roads / 7 Surveys



Secondary Roads / 6 Surveys

