

RADAR TRAFFIC SURVEYS**March 2012****OFFICER TRAFFIC SURVEYS**

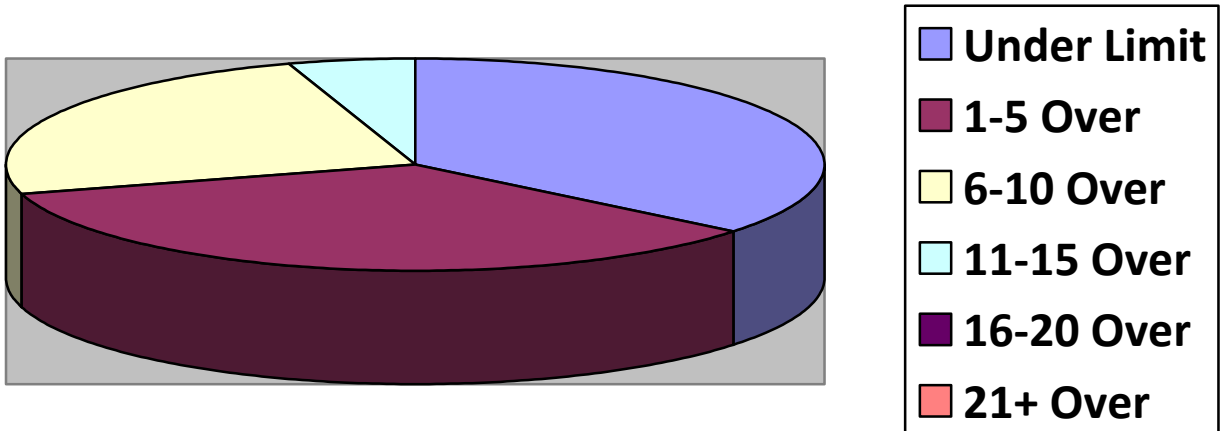
Totals	Rte 149 (1	2 nd NH Tpk(3	OldCounty (3	Clement (1	EstDrng (1
Total Cars	18	61	45	11	8
Under Limit	16	12	7	1	1
+1 – 5 over	2	25	16	8	5
+6 – 10 over	0	19	18	2	1
+11 – 15 over	0	4	4	0	0
+16 – 20 over					1
+ 21 over					
Stopped	0	5	1	0	1
Warnings	0	5	1	0	1
Summons	0	0	0	0	0

Totals	Rsvr (LngWds(1	Mnslvl(Mill/Union(Cross(
Total Cars		13			
Under Limit		2			
+1 – 5 over		9			
+6 – 10 over		2			
+11 – 15 over		0			
+16 – 20 over		0			
+ 21 over					
Stopped		0			
Warnings		0			
Summons		0			

VOLUNTEER TRAFFIC SURVEYS

Totals	EastDrng(Union (Mill (HltnCrs(ClmtHill(LngWds (
Total Cars						
Under Limit						
+ 1 – 5 over						
+ 6 – 10 over						
+ 11 – 15 over						
+ 16 – 20 over						
+ 21 over						

Primary Roads / 4 Surveys



Secondary Roads / 6 Surveys

