

RADAR TRAFFIC SURVEYS**MAY 2012****OFFICER TRAFFIC SURVEYS**

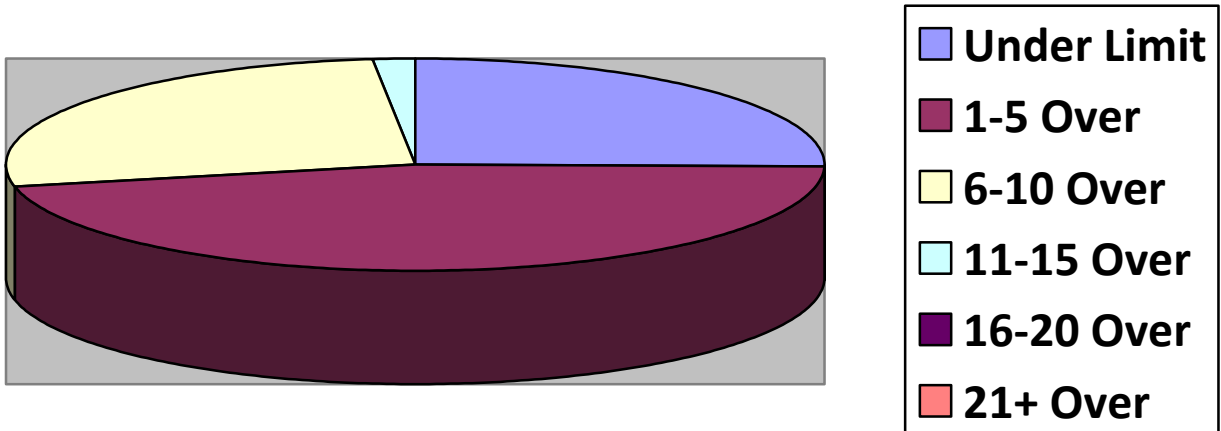
Totals	Rte 149 (1	2 nd NH Tpk(2	OldCounty (1	Clement (2	EstDrng (2
Total Cars	69	59	14	46	12
Under Limit	29	4	1	7	9
+1 – 5 over	32	28	9	25	1
+6 – 10 over	7	28	2	11	2
+11 – 15 over	1	1	2	3	0
+16 – 20 over					
+ 21 over					
Stopped	1	0	2	3	0
Warnings	1	0	2	3	0
Summons	0	0	0	0	0

Totals	Rsvr (LngWds(2	Mnslvl(1	Mill/Union(Cross(1
Total Cars		52	14		14
Under Limit		21	5		2
+1 – 5 over		24	8		6
+6 – 10 over		5	0		4
+11 – 15 over		2	1		2
+16 – 20 over		1			
+ 21 over					
Stopped		2	1		2
Warnings		2	1		2
Summons		0	0		0

VOLUNTEER TRAFFIC SURVEYS

Totals	EastDrng(Union (Mill (HltnCrs(ClmtHill(LngWds (
Total Cars						
Under Limit						
+ 1 – 5 over						
+ 6 – 10 over						
+ 11 – 15 over						
+ 16 – 20 over						
+ 21 over						

Primary Roads / 3 Surveys



Secondary Roads / 9 Surveys

