

RADAR TRAFFIC SURVEYS**May 2011****OFFICER TRAFFIC SURVEYS**

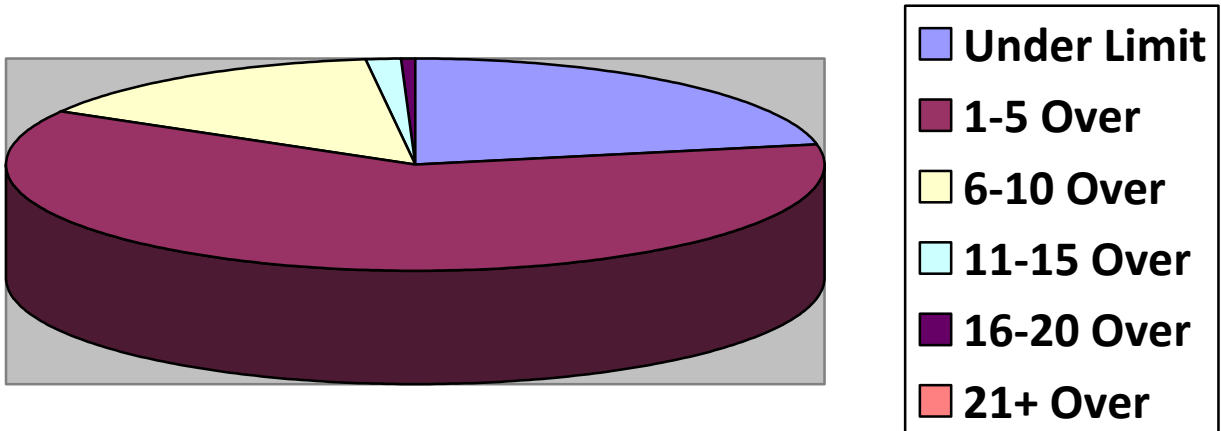
Totals	Rte 149 (1	2 nd NH Tpk(3	OldCounty (4	Clement (2	Un/Mill (
Total Cars	62	110	79	28	
Under Limit	4	31	11	5	
+1 – 5 over	41	54	30	14	
+6 – 10 over	14	9	27	5	
+11 – 15 over	2	0	9	4	
+16 – 20 over		1	1		
+ 21 over			1		
Stopped	2	1	4	3	
Warnings	2	1	4	3	
Summons	0	0	0	0	

Totals	North (1	EastDrngRd(Lngwds(2	PtrWdHl(Cross(
Total Cars	8		40		
Under Limit	7		11		
+1 – 5 over	1		18		
+6 – 10 over			7		
+11 – 15 over			1		
+16 – 20 over			3		
+ 21 over					
Stopped			4		
Warnings			4		
Summons			0		

VOLUNTEER TRAFFIC SURVEYS

Totals	EastDrng(Union (Mill (HltnCrs(ClmtHill(LngWds (
Total Cars						
Under Limit						
+ 1 – 5 over						
+ 6 – 10 over						
+ 11 – 15 over						
+ 16 – 20 over						
+ 21 over						

Primary Roads / 4 Surveys



Secondary Roads / 9 Surveys

