

RADAR TRAFFIC SURVEYS**NOVEMBER 2012****OFFICER TRAFFIC SURVEYS**

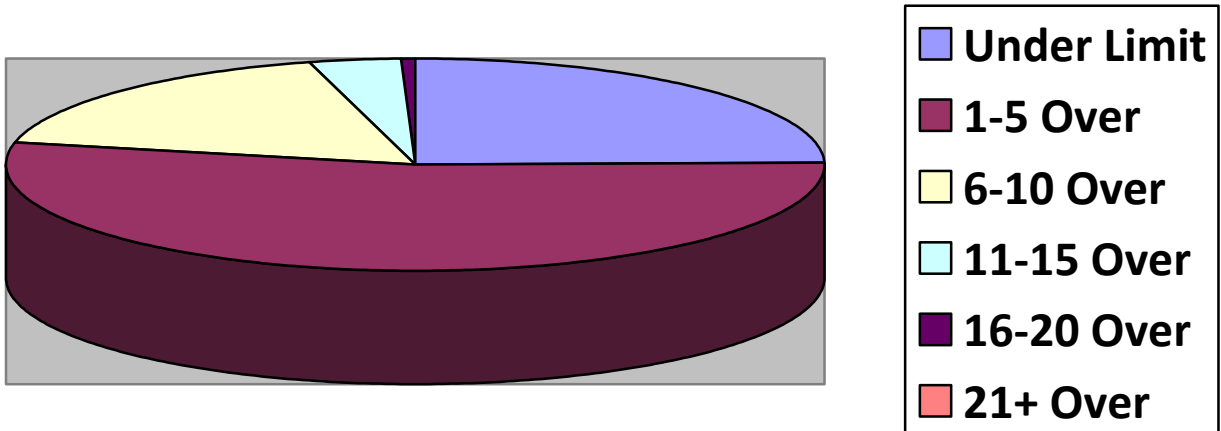
Totals	Rte 149 (1	2 nd NH Tpk(4	OldCounty (2	Clement (1	EstDrng (1
Total Cars	72	124	44	38	4
Under Limit	33	25	2	15	0
+1 – 5 over	26	65	26	18	2
+6 – 10 over	11	25	12	5	2
+11 – 15 over	1	8	4		0
+16 – 20 over		1			
+ 21 over					
Stopped	1	9	1		
Warnings	1	9	1		
Summons	0	0	0		

Totals	Rsvr (1	LngWds(1	Mnslvl(Other(1	Cross(2
Total Cars	4	20		5	21
Under Limit	1	5		5	2
+1 – 5 over	2	6			10
+6 – 10 over	1	0			8
+11 – 15 over		1			1
+16 – 20 over					
+ 21 over					
Stopped		1			1
Warnings		0			1
Summons		1			0

VOLUNTEER TRAFFIC SURVEYS

Totals	DrngCtr(1	Union (Mill (OldCty(1	ClmtHill(LngWds (
Total Cars	40			16		
Under Limit	0			0		
+ 1 – 5 over	35			8		
+ 6 – 10 over	5			8		
+ 11 – 15 over				0		
+ 16 – 20 over						
+ 21 over						

Primary Roads / 6 Surveys



Secondary Roads / 10 Surveys

