

RADAR TRAFFIC SURVEYS**OCTOBER 2012****OFFICER TRAFFIC SURVEYS**

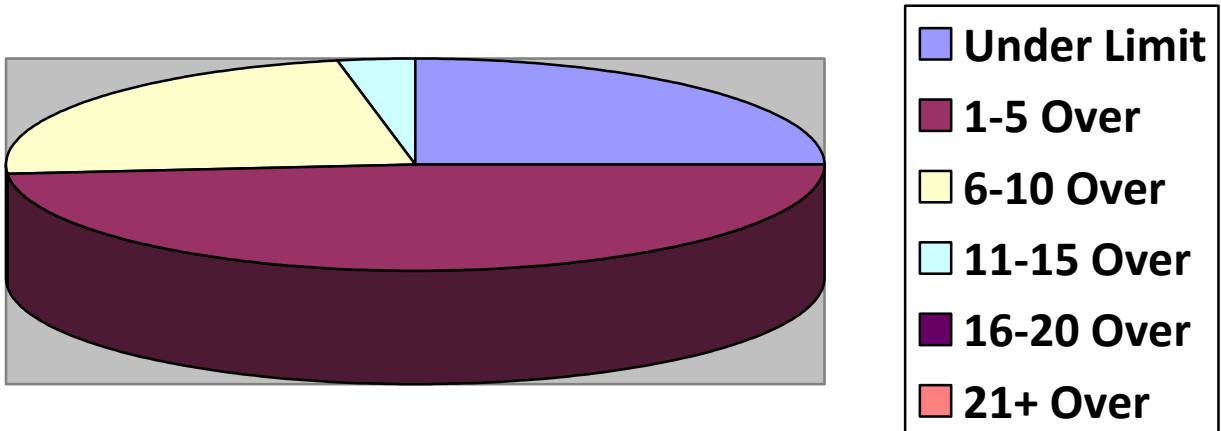
Totals	Rte 149 (2)	2 nd NH Tpk(4)	OldCounty (2)	Clement (1)	EstDrng (1)
Total Cars	72	60	27	18	10
Under Limit	24	9	6	4	3
+1 – 5 over	33	31	15	9	3
+6 – 10 over	15	16	6	4	4
+11 – 15 over		4		1	
+16 – 20 over					
+ 21 over					
Stopped	0	2	0	1	0
Warnings	0	2	0	1	0
Summons	0	0	0	0	0

Totals	Rsvr (LngWds(Mnslvl(1	Other(3	Cross(2
Total Cars			9	33	23
Under Limit			2	7	2
+1 – 5 over			2	13	11
+6 – 10 over			5	10	8
+11 – 15 over				1	1
+16 – 20 over					1
+ 21 over					
Stopped			0	1	2
Warnings			0	1	2
Summons			0	0	0

VOLUNTEER TRAFFIC SURVEYS

Totals	DrngCtr(1	Union (Mill (OldCty(ClmtHill(LngWds (
Total Cars	48					
Under Limit	2					
+ 1 – 5 over	9					
+ 6 – 10 over	26					
+ 11 – 15 over	7					
+ 16 – 20 over	4					
+ 21 over						

Primary Roads / 6 Surveys



Secondary Roads / 11 Surveys

