

**RADAR TRAFFIC SURVEYS****October 2011****OFFICER TRAFFIC SURVEYS**

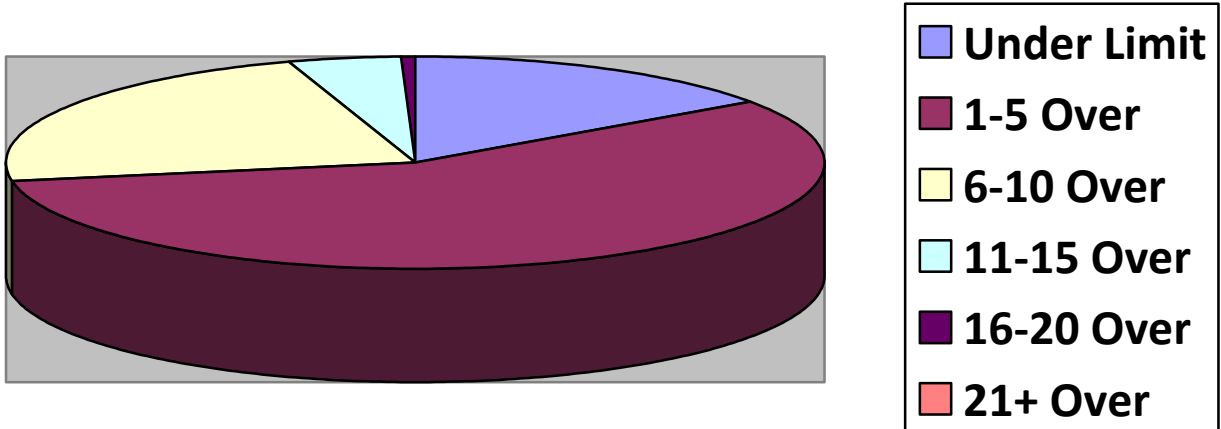
Totals	Rte 149 (1	2 <sup>nd</sup> NH Tpk(5	OldCounty (1	Clement (1	EstDrng (
Total Cars	65	231	36	26	
Under Limit	20	25	4	6	
+1 – 5 over	32	136	18	15	
+6 – 10 over	10	57	11	5	
+11 – 15 over	3	10	3		
+16 – 20 over		2			
+ 21 over					
Stopped	3	10			
Warnings	3	10			
Summons	0	0			

Totals	Rsvr (1	LngWds(1	Mnslvl(1	SkyFarm(	Cross(
Total Cars	7	10	8		
Under Limit	0	0	3		
+1 – 5 over	7	8	5		
+6 – 10 over		0			
+11 – 15 over		2			
+16 – 20 over					
+ 21 over					
Stopped					
Warnings					
Summons					

**VOLUNTEER TRAFFIC SURVEYS**

Totals	EastDrng(	Union (	Mill (	HltnCrs(	ClmtHill(	LngWds (
Total Cars						
Under Limit						
+ 1 – 5 over						
+ 6 – 10 over						
+ 11 – 15 over						
+ 16 – 20 over						
+ 21 over						

## Primary Roads / 6 Surveys



## Secondary Roads / 5 Surveys

