

RADAR TRAFFIC SURVEYS**SEPTEMBER 2012****OFFICER TRAFFIC SURVEYS**

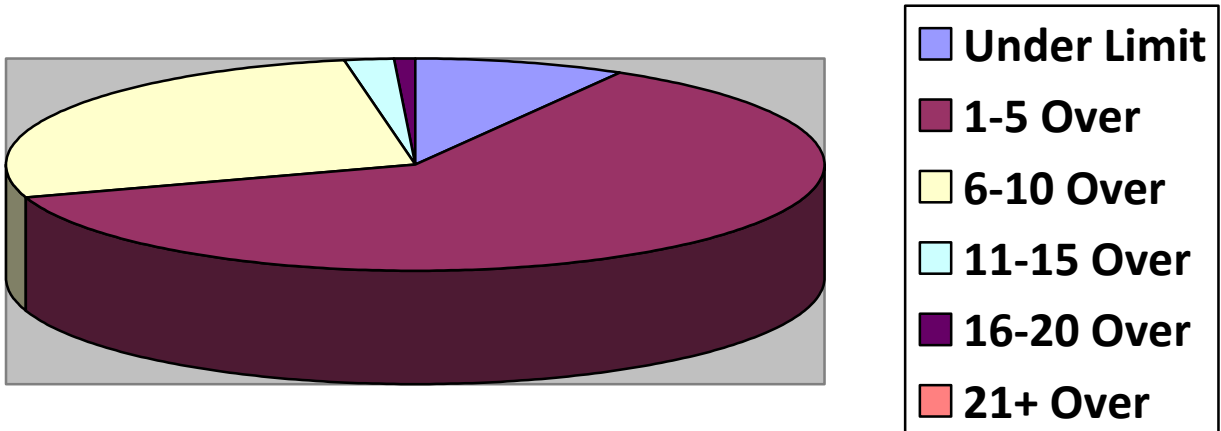
Totals	Rte 149 (2 nd NH Tpk(2	OldCounty (2	Clement (2	EstDrng (2
Total Cars		107	22	23	19
Under Limit		9	1	7	2
+1 – 5 over		66	10	12	11
+6 – 10 over		29	8	4	6
+11 – 15 over		2	1		
+16 – 20 over		1	2		
+ 21 over					
Stopped		1	3	0	0
Warnings		1	3	0	0
Summons		0	0	0	0

Totals	Rsvr (1	LngWds(1	Mnslvl(Other(2	Cross(2
Total Cars		17		21	39
Under Limit		8		6	5
+1 – 5 over		9		10	16
+6 – 10 over				4	11
+11 – 15 over				1	6
+16 – 20 over					1
+ 21 over					
Stopped		0		0	6
Warnings		0		0	6
Summons		0		0	0

VOLUNTEER TRAFFIC SURVEYS

Totals	EastDrng(Union (Mill (OldCty(ClmtHill(LngWds (
Total Cars						
Under Limit						
+ 1 – 5 over						
+ 6 – 10 over						
+ 11 – 15 over						
+ 16 – 20 over						
+ 21 over						

Primary Roads / 2 Surveys



Secondary Roads / 11 Surveys

