

RADAR TRAFFIC SURVEYS**DECEMBER 2015****OFFICER TRAFFIC SURVEYS**

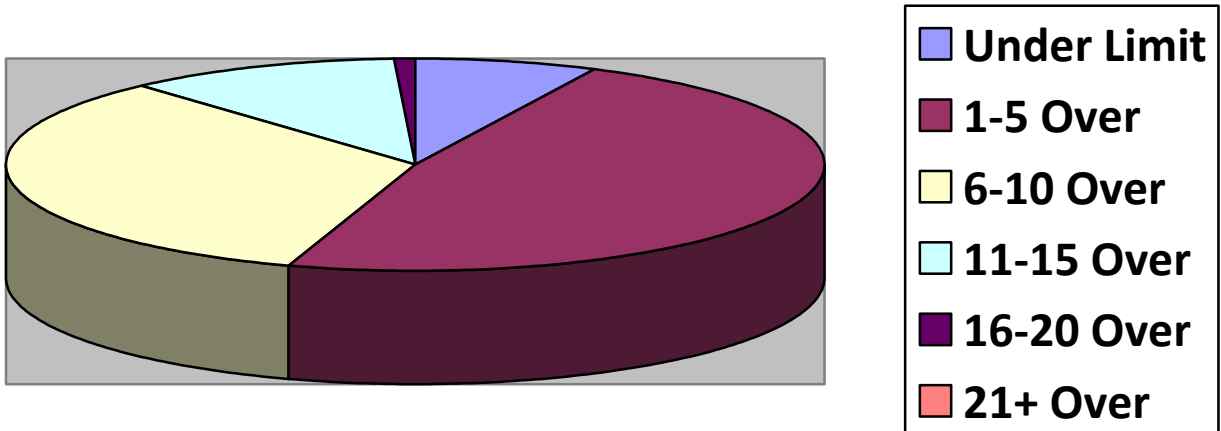
Totals	Rte 149 (2 nd NH Tpk(4	OldCounty (1	Clement (1	EstDrng (4
Total Cars					
Under Limit		10	0	4	0
+1 – 5 over		66	4	9	8
+6 – 10 over		46	7	6	14
+11 – 15 over		15	3	4	3
+16 – 20 over		1	0	0	0
+ 21 over		0	0	0	0
Stopped		4	0	4	1
Warnings					
Summons					

Totals	Rsvr (LngWds(1	Mnslvl(Other(2	Cross(1
Total Cars					
Under Limit		2		9	2
+1 – 5 over		7		28	7
+6 – 10 over		12		18	1
+11 – 15 over		0		0	0
+16 – 20 over		0		0	1
+ 21 over		0		0	0
Stopped		0		0	1
Warnings					
Summons					

VOLUNTEER TRAFFIC SURVEYS

Totals	EastDrng(Union (Mill (OldCty(ClmtHill(LngWds (
Total Cars						
Under Limit						
+ 1 – 5 over						
+ 6 – 10 over						
+ 11 – 15 over						
+ 16 – 20 over						
+ 21 over						

Primary Roads / 4 Surveys



Secondary Roads / 10 Surveys

