

RADAR TRAFFIC SURVEYS**OCTOBER 2017****OFFICER TRAFFIC SURVEYS**

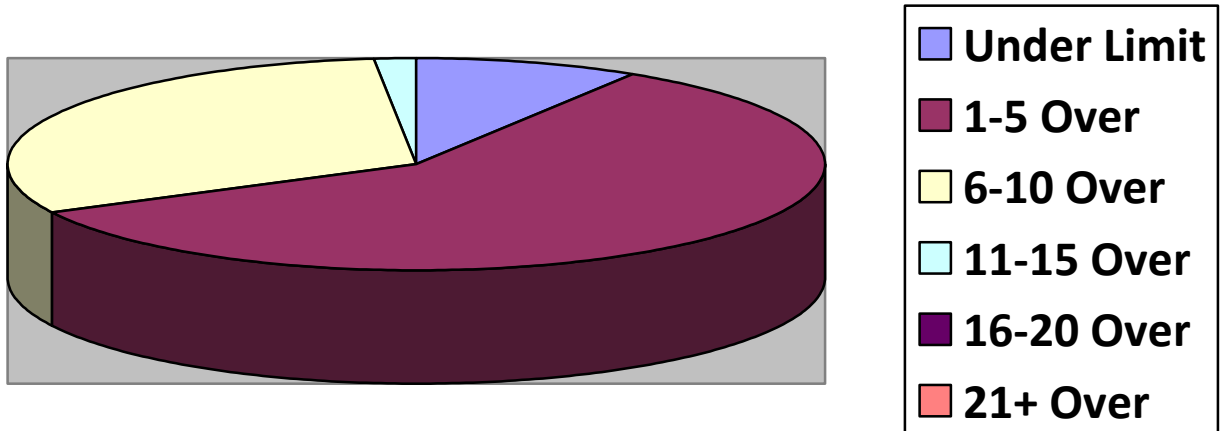
Totals	Rte 149 (1	2 nd NH Tpk(4	OldCounty (5	Clement (1	EstDrng (5
Total Cars					
Under Limit	17	10	10	0	12
+1 – 5 over	37	74	52	10	28
+6 – 10 over	5	54	44	8	12
+11 – 15 over	0	3	7	0	0
+16 – 20 over	0	0	0	0	0
+ 21 over	0	0	0	0	0
Stopped	0	1	0	0	1

Totals	Rsvr (LngWds(Mnslvl(2	Other(1	Cross(2
Total Cars					
Under Limit			1	5	6
+1 – 5 over			11	7	16
+6 – 10 over			9	1	7
+11 – 15 over			1	0	2
+16 – 20 over			0	0	1
+ 21 over			0	0	0
Stopped			0	0	1

VOLUNTEER TRAFFIC SURVEYS

Totals	EastDrng(Union (Mill (OldCty(ClmtHill(LngWds (
Total Cars						
Under Limit						
+ 1 – 5 over						
+ 6 – 10 over						
+ 11 – 15 over						
+ 16 – 20 over						
+ 21 over						

Primary Roadways - 5 Surveys



SECONDARY ROADWAYS - 15 SURVEYS

