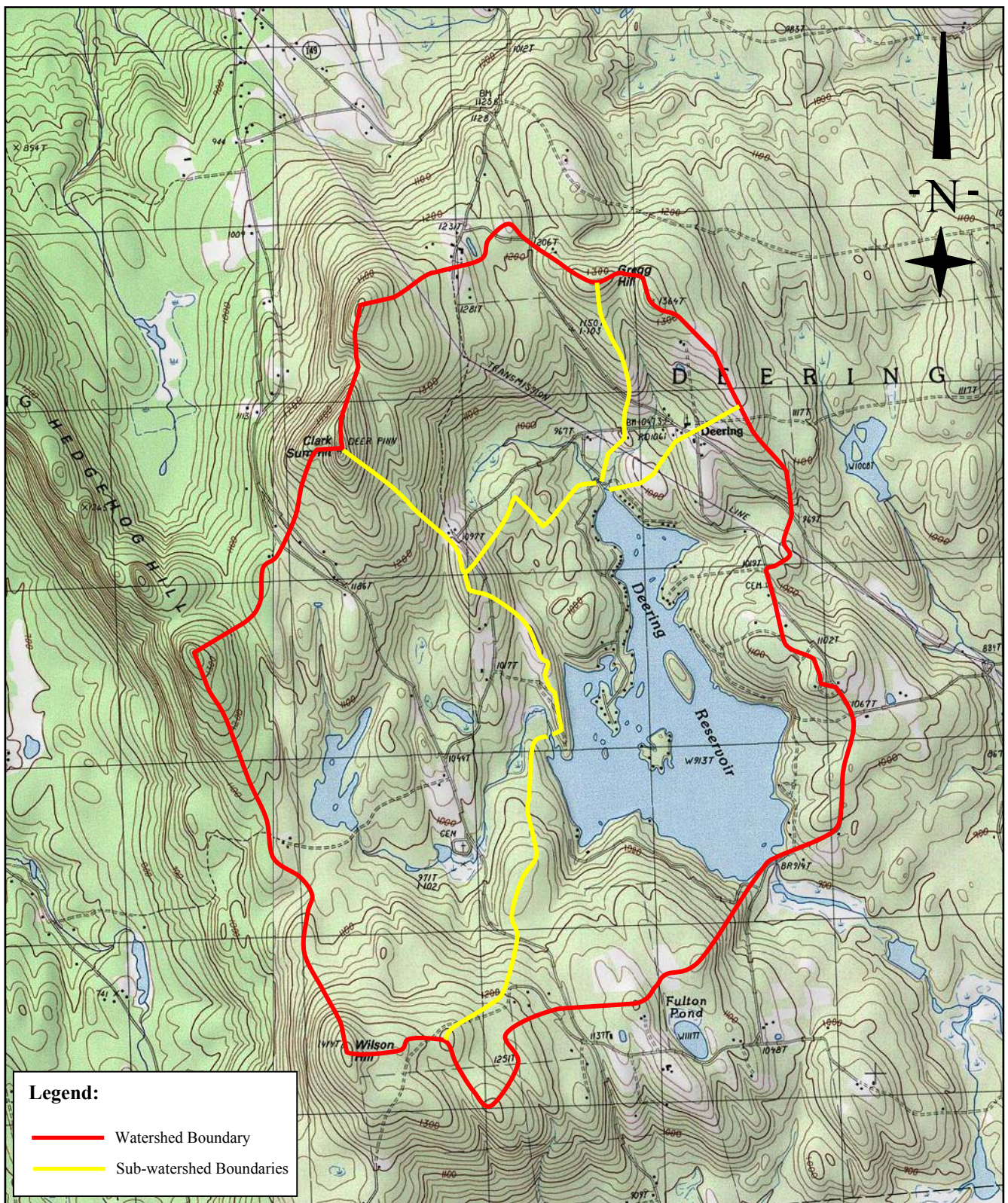


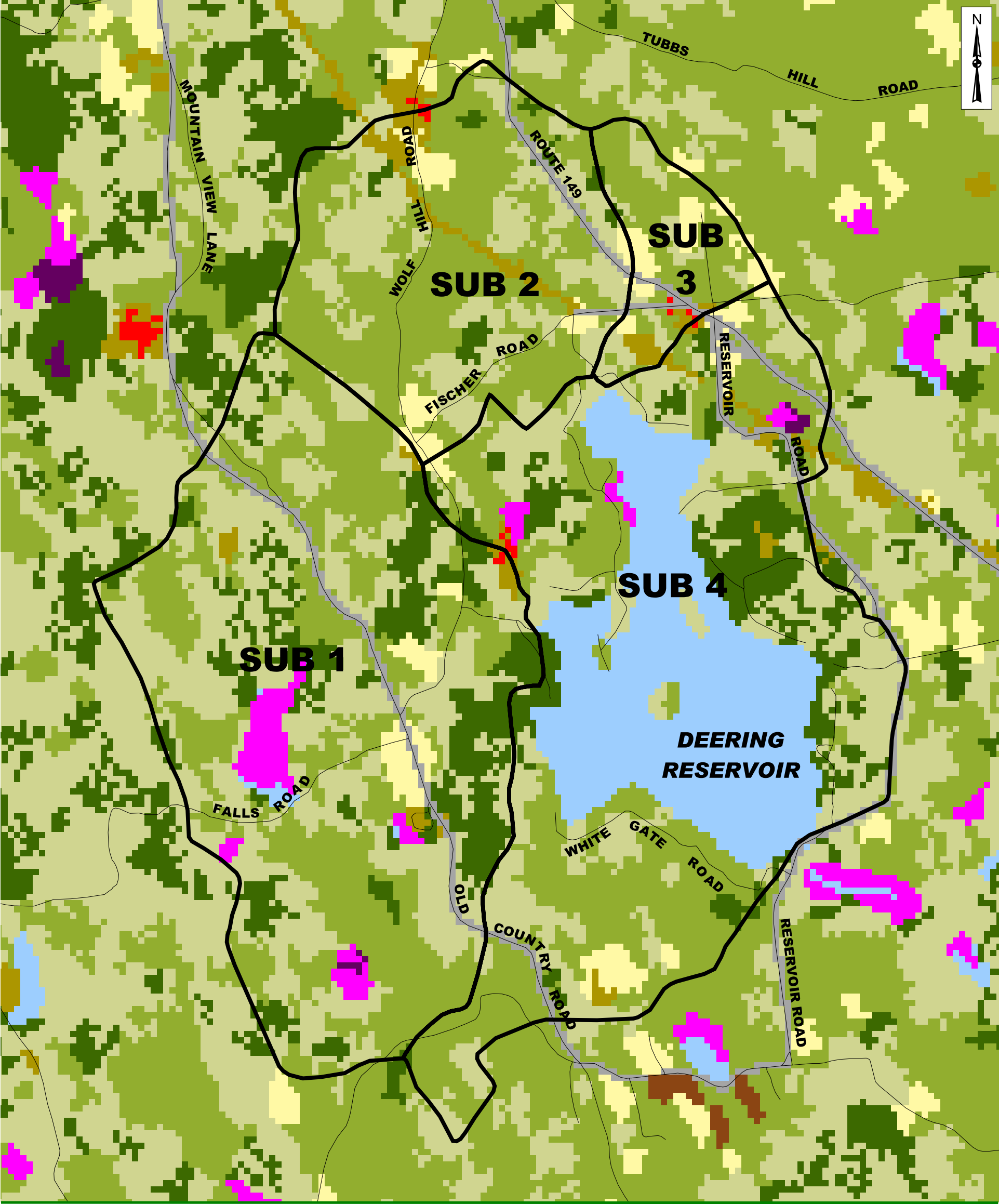
# Figures

---









| LAND COVER CLASSIFICATION BY SUB-BASIN |   |             |   |
|--|---|-------------|---|
| SUB-BASIN 1                            |   | SUB-BASIN 2 |   |
|  | Coniferous Forest - 175.0 Acres               |             | Coniferous Forest - 17.3 Acres                |
|  | Crops/Pasture - 23.5 Acres                    |             | Crops/Pasture - 26.3 Acres                    |
|  | Deciduous Forest - 355.2 Acres                |             | Deciduous Forest - 267.9 Acres                |
|  | Forested Wetland - 1.4 Acres                  |             | Mixed Forest - 148.3 Acres                    |
|  | Mixed Forest - 409.2 Acres                    |             | Other Cleared - 19.7 Acres                    |
|  | Open Wetland - 34.9 Acres                     |             | Residential/Commercial/Industrial - 0.6 Acres |
|  | Other Cleared - 10.8 Acres                    |             | Transportation - 12.4 Acres                   |
|  | Residential/Commercial/Industrial - 0.6 Acres |             |   |
|  | Transportation - 24.5 Acres                   |             |   |
|  | Water - 4.4 Acres                             |             |   |
| SUB-BASIN 3                            |   | SUB-BASIN 4 |   |
|  | Coniferous Forest - 0.8 Acres                 |             | Coniferous Forest - 131.7 Acres               |
|  | Crops/Pasture - 20.1 Acres                    |             | Crops/Pasture - 24.5 Acres                    |
|  | Deciduous Forest - 66.0 Acres                 |             | Deciduous Forest - 314.5 Acres                |
|  | Mixed Forest - 23.5 Acres                     |             | Forested Wetland - 2.2 Acres                  |
|  | Other Cleared - 7.0 Acres                     |             | Mixed Forest - 281.4 Acres                    |
|  | Residential/Commercial/Industrial - 0.8 Acres |             | Open Wetland - 9.2 Acres                      |
|  | Transportation - 5.4 Acres                    |             | Other Cleared - 14.9 Acres                    |
|  |   |             | Residential/Commercial/Industrial - 1.4 Acres |
|  |   |             | Transportation - 29.3 Acres                   |
|  |   |             | Water - 354.8 Acres                           |