

RADAR TRAFFIC SURVEYS**July 2013****OFFICER TRAFFIC SURVEYS**

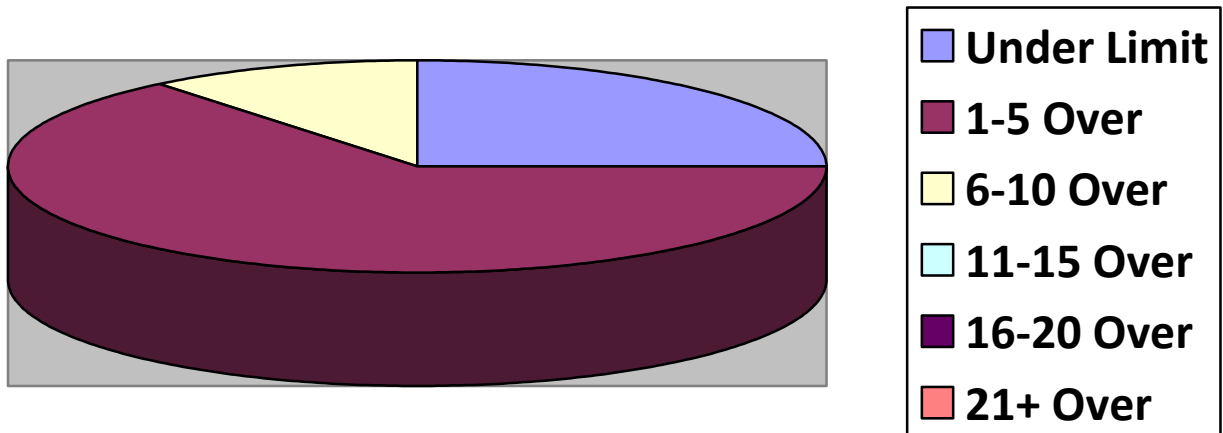
Totals	Rte 149 (2 nd NH Tpk(1	OldCounty (Clement (3	EstDrng (2
Total Cars		28		72	14
Under Limit		7		13	3
+1 – 5 over		18		34	9
+6 – 10 over		3		23	2
+11 – 15 over				2	
+16 – 20 over					
+ 21 over					
Stopped		0		1	0
Warnings		0		1	0
Summons		0		0	0

Totals	Rsvr (LngWds(1	Mnslvl(Other(1	Cross(2
Total Cars		31		7	22
Under Limit		4		2	2
+1 – 5 over		17		4	12
+6 – 10 over		9		1	7
+11 – 15 over		1			1
+16 – 20 over		1			
+ 21 over					
Stopped		2		0	1
Warnings		2		0	1
Summons		0		0	0

VOLUNTEER TRAFFIC SURVEYS

Totals	DrngCtr(Union (Mill (OldCty(ClmtHill(LngWds (
Total Cars						
Under Limit						
+ 1 – 5 over						
+ 6 – 10 over						
+ 11 – 15 over						
+ 16 – 20 over						
+ 21 over						

Primary Roads / 1 Surveys



Secondary Roads / 9 Surveys

