

RADAR TRAFFIC SURVEYS**NOVEMBER 2015****OFFICER TRAFFIC SURVEYS**

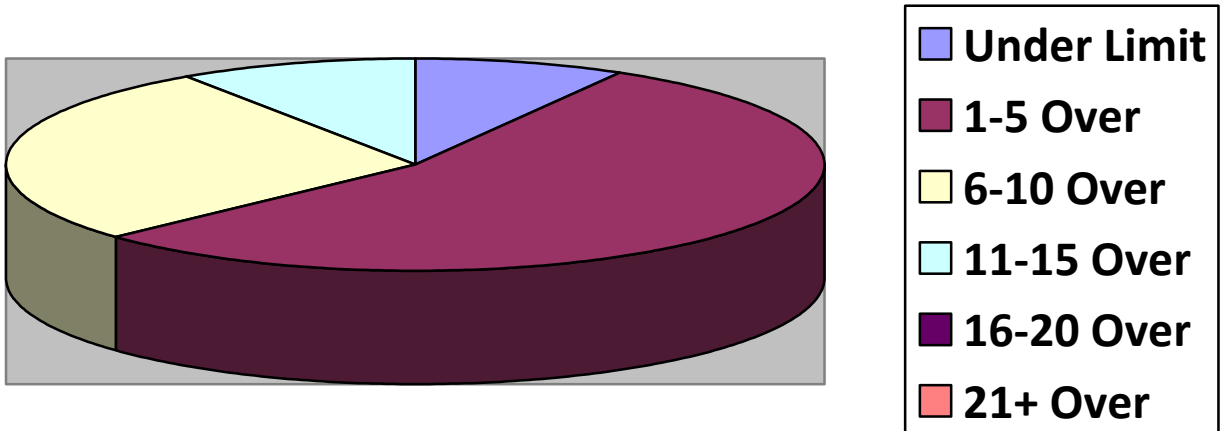
Totals	Rte 149 (2 nd NH Tpk(2	OldCounty (1	Clement (1	EstDrng (1
Total Cars					
Under Limit		8	1	4	0
+1 – 5 over		52	2	10	16
+6 – 10 over		26	0	4	8
+11 – 15 over		9	1	2	0
+16 – 20 over		0	0	0	0
+ 21 over					
Stopped		5	1	2	0
Warnings					
Summons					

Totals	Rsvr (1	LngWds(1	Mnslvl(Other(1	Cross(2
Total Cars					
Under Limit	2	2		0	5
+1 – 5 over	8	15		9	6
+6 – 10 over	4	7		8	7
+11 – 15 over	0	3		3	1
+16 – 20 over	0	0		1	0
+ 21 over					
Stopped	0	1		1	1
Warnings					
Summons					

VOLUNTEER TRAFFIC SURVEYS

Totals	EastDrng(Union (Mill (OldCty(ClmtHill(LngWds (
Total Cars						
Under Limit						
+ 1 – 5 over						
+ 6 – 10 over						
+ 11 – 15 over						
+ 16 – 20 over						
+ 21 over						

Primary Roads / 1 Surveys



Secondary Roads / 8 Surveys

