

RADAR TRAFFIC SURVEYS**OCTOBER 2015****OFFICER TRAFFIC SURVEYS**

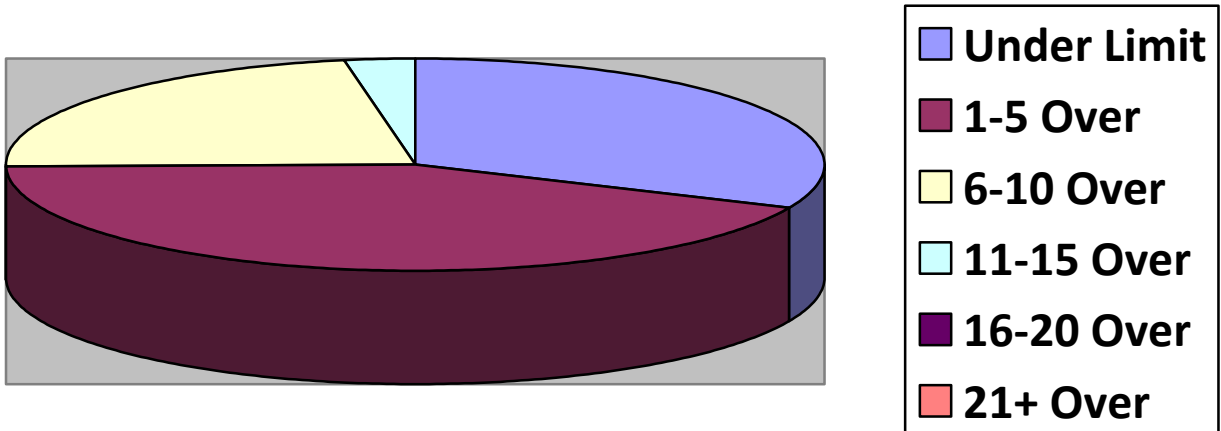
Totals	Rte 149 (2 nd NH Tpk(4	OldCounty (4	Clement (4	EstDrng (3
Total Cars					
Under Limit		34	1	31	8
+1 – 5 over		46	31	45	28
+6 – 10 over		24	26	14	5
+11 – 15 over		3	3	4	0
+16 – 20 over					
+ 21 over					
Stopped		3	3	4	0
Warnings					
Summons					

Totals	Rsvr (1	LngWds(Mnslvl(Other(Cross(1
Total Cars					
Under Limit					3
+1 – 5 over					5
+6 – 10 over					5
+11 – 15 over					1
+16 – 20 over					
+ 21 over					
Stopped					1
Warnings					
Summons					

VOLUNTEER TRAFFIC SURVEYS

Totals	EastDrng(Union (Mill (OldCty(ClmtHill(LngWds (
Total Cars						
Under Limit						
+ 1 – 5 over						
+ 6 – 10 over						
+ 11 – 15 over						
+ 16 – 20 over						
+ 21 over						

Primary Roads / 4 Surveys



Secondary Roads / 12 Surveys

